

NEW from
BAXTER CRUSHERS LTD
The 1100 × 350mm
43'' × 14''
SECONDARY JAW CRUSHER

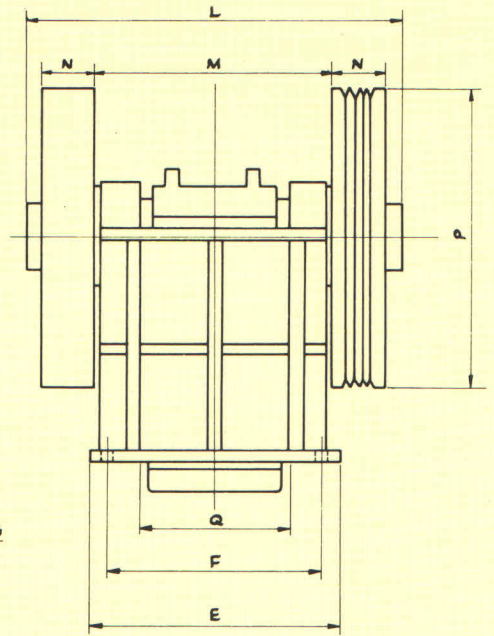
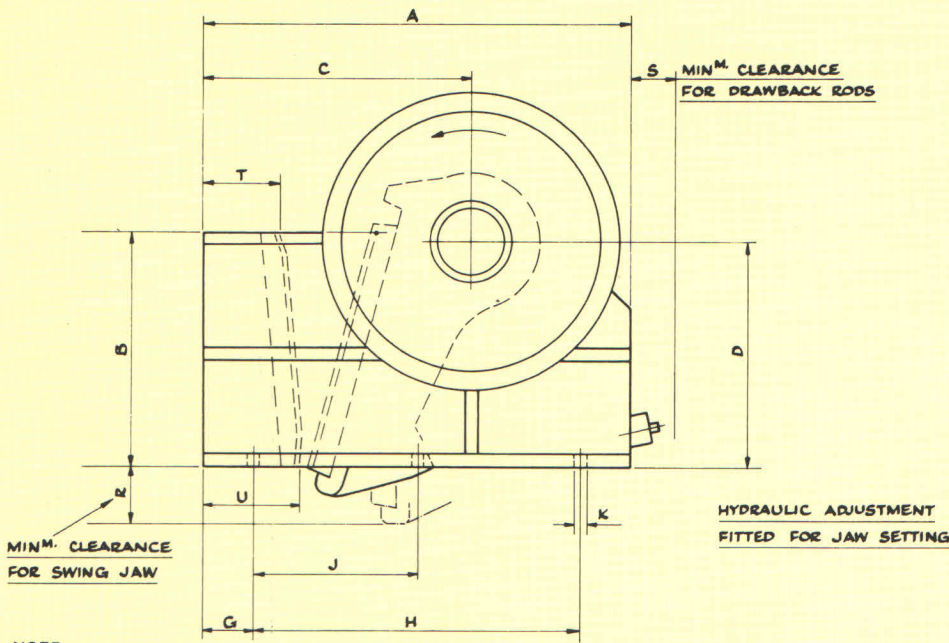


APPROX. OUTPUT CAPACITY: 1½'' SETTING ... 65 T.P.H.
2'' SETTING ... 85 T.P.H.
3'' SETTING ... 120 T.P.H.
4'' SETTING ... 160 T.P.H.



BAXTER CRUSHERS LTD.

SALES & PROJECT OFFICE
9, THORN PARK HOUSE,
33, STATION ROAD, BATLEY,
WEST YORKSHIRE, WF17 5SU.
TEL: 01924 445757 FAX: 01924 445759

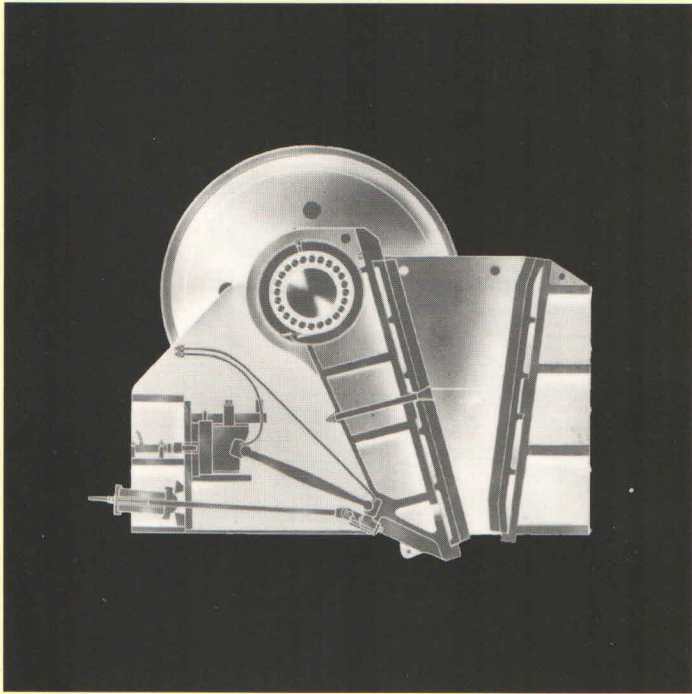


NOTE
These are NOT Certified Drawings.— All Dimensions are subject to confirmation.

| Model No. | Size of Crusher Mouth | A | B | C | D | E | F | G | H | J | K | L | M | N | P | Q | R | S | T | U |
|-----------|-------------------------------|--------|--------|--------|---------|--------|--------|--------|--------|--------|-------|--------|--------|--------|--------|--------|-------|--------|--------|--------|
| ST-1611 | 16 × 11 ins 406 × 280 mm | 51 1/2 | 28 | 32 3/8 | 27 | 29 1/2 | 25 1/2 | 8 | 35 1/2 | — | 1 1/8 | 45 1/2 | 29 1/2 | 6 1/2 | 36 1/2 | 18 | 9 | 5 1/2 | 9 1/2 | 12 |
| ST-2013 | 20 × 13 ins 500 × 330 mm | 65 | 44 1/2 | 37 1/2 | 43 1/2 | 35 | 30 1/2 | 5 1/2 | 54 | — | 1 3/8 | 50 1/2 | 33 1/2 | 6 1/2 | 36 1/2 | 22 | — | 10 1/2 | 13 1/2 | 13 1/2 |
| ST-2417 | 24 × 17 ins 610 × 432 mm | 69 3/8 | 41 3/8 | 44 1/4 | 40 3/8 | 39 3/8 | 34 1/2 | 9 1/2 | 50 | — | 1 3/8 | 61 3/8 | 39 1/2 | 8 3/8 | 48 1/2 | 25 3/8 | 11 | 6 | 12 | 16 |
| ST-3224 | 32 × 24 ins 813 × 610 mm | 88 3/4 | 54 3/4 | 55 1/2 | 57 3/8 | 50 | 43 3/4 | 6 | 76 3/4 | 38 3/8 | 2 1/8 | 80 1/2 | 49 1/2 | 12 3/8 | 65 | 34 | 9 1/2 | 8 | 15 | 21 |
| ST-3612 | 36 × 12 ins 914 × 305 mm | 66 | 37 3/8 | 37 1/2 | 47 3/8 | 54 | 48 | 5 1/2 | 55 | — | 2 1/8 | 78 | 53 1/2 | 8 | 48 | 38 | — | 4 | 13 3/4 | 17 1/2 |
| ST-3630 | 36 × 30 ins 914 × 762 mm | 98 | 67 | 61 1/2 | 66 1/2 | 56 | 49 1/2 | 6 | 86 | 46 | 2 1/8 | 86 1/2 | 55 1/2 | 12 3/8 | 65 | 39 | 14 | 13 | 17 | 22 1/2 |
| ST-4032 | 40 × 32 ins 1016 × 813 mm | 120 | 72 | 74 1/2 | 81 1/2 | 63 | 56 3/4 | 9 | 102 | 51 | 2 1/8 | 100 | 65 1/2 | 14 | 66 | 43 1/2 | 16 | 16 | 19 | 27 1/2 |
| ST-5036 | 50 × 36 ins 1270 × 914 mm | 128 | 79 1/2 | 78 1/2 | 81 1/2 | 72 | 65 3/4 | 10 3/8 | 108 | 54 | 2 1/8 | 111 | 74 1/2 | 14 3/4 | 66 | 52 1/2 | 17 | 16 | 20 | 29 1/2 |
| ST-5040 | 50 × 40 ins 1270 × 1016 mm | 133 | 79 1/2 | 83 1/2 | 81 1/2 | 72 | 65 3/4 | 10 3/8 | 113 | 59 | 2 1/8 | 111 | 74 1/2 | 14 3/4 | 66 | 52 1/2 | 17 | 16 | 21 | 32 |
| ST-5042 | 50 × 42 ins 1270 × 1067 mm | 140 | 100 | 95 | 100 1/8 | 72 | 66 | 10 | 120 | 59 | 2 1/8 | 110 | 74 1/2 | 15 3/8 | 82 3/8 | 53 1/2 | 21 | 16 | 30 | 30 |

| Model No. | Maximum Size of Feed | Closed Setting Min Max | Approx. Capacity Long Tons/Hr | H.P. | Speed RPM | No. & Size of Vee Ropes | Approx. Total Weight |
|-----------|----------------------|------------------------|-------------------------------|---------|-----------|-------------------------|-------------------------|
| ST-1611 | 9 1/2 ins 248 mm | 1 - 3 25 - 76 | 8-30 | 20-25 | 300 | 4-'C' | 6720 lbs 3050 kgs |
| ST-2013 | 12 ins 305 mm | 1 1/2 - 4 38 - 102 | 12-40 | 30 | 270 | 5-'C' | 10100 lbs 4600 kgs |
| ST-2417 | 15 1/2 ins 394 mm | 2 - 4 51 - 102 | 27-55 | 40-50 | 280 | 6-'C' | 14560 lbs 6610 kgs |
| ST-3224 | 22 ins 559 mm | 2 1/2 - 8 64 - 203 | 50-140 | 60 | 260 | 6-'C' | 33600 lbs 15250 kgs |
| ST-3612 | 11 ins 279 mm | 1 - 3 25 - 76 | 20-70 | 60 | 320 | 6-'C' | 19600 lbs 8900 kgs |
| ST-3630 | 28 ins 711 mm | 3 - 9 76 - 229 | 70-200 | 75 | 260 | 6-'C' | 40300 lbs 18300 kgs |
| ST-4032 | 30 ins 762 mm | 4 - 10 102 - 254 | 90-350 | 100 | 250 | 7-'D' | 68300 lbs 31000 kgs |
| ST-5036 | 34 ins 864 mm | 5 - 12 127 - 305 | 200-425 | 130-150 | 220 | 8-'D' | 85100 lbs 38600 kgs |
| ST-5040 | 38 ins 965 mm | 6 - 14 152 - 356 | 240-500 | 133-150 | 220 | 8-'D' | 89600 lbs 40700 kgs |
| ST-5042 | 40 ins 1016 mm | 5 - 12 127 - 305 | 225-650 | 150-200 | 220 | 8-'D' | 112500 lbs 51000 kgs |

The capacities given are based on a continuous feed of hard limestone, weighing at least 100 lbs/cubic foot. The capacities are subject to variation dependent upon: the jaw setting, the material to be crushed and the method of feed. All feed should be of a size that will readily enter the crusher. Undersize material should be removed from the feed.



Baxter Plant

There is a right size crusher for you in the Baxter range with outputs upto 650 tons per hour.

For extra hard conditions in difficult materials Baxters produce a range of Heavy Duty Double Toggle Crushers incorporating many specially designed features.

Baxter Plant is supplied and used throughout the world, complete fixed type crushing and screening plant, mobile or skid mounted units with Jaw Crushers ranging from 16" x 10" upto 50" x 42".

The Baxter range of Single Toggle (overhead eccentric) Jaw Crushers include many modern designs features, which are the result of many years of research and development.

All the machines in the range include electrically welded steel plate frames which are stress relieved, shot blasted and zinc sprayed prior to precision machining. Heavy duty spherical roller bearings are incorporated and every machine in the range is fitted with hydraulically operated quick setting jaw adjustment mechanism. Other features include high grade chrome manganese steel reversible crusher jaws and specially lubricated abrasion resistant toggle plates.

